

# Prague - Hilton Old Town Hotel



## Hilton Old Town

### At a Glance

Stay in the heart of the city at the Hilton Prague Old Town hotel. Situated at the gates to the Old Town, the hotel is within walking distance to shops, restaurants, and attractions. The city's landmarks, including Old Town Square, Wenceslas Square, and Charles Bridge, are a ten-minute walk away. Enjoy easy access to public transport from Namesti Republiky metro station and Main Train Station, located steps from the hotel. Václav Havel Airport Prague is a 30-minute drive away from this central Prague hotel.

Relax after a day of exploring or working in Prague with a coffee in the lobby. Savor European cuisine given an Asian twist at the contemporary Zinc Restaurant, followed by cocktails in the bar. Refresh with a swim in the pool and work out at the fitness center. Catch up on work and keep in touch with the office at the business center.

Boasting 1,200 sq. meters of event space and a central location, the hotel is ideal for meetings and events. Host a business meeting, cocktail party or fairytale wedding for up to 340 guests at Hilton Prague Old Town. Enjoy a choice of flexible meeting rooms including the stylish Dvorak Ballroom. The hotel features contemporary design and modern technology including internet access.

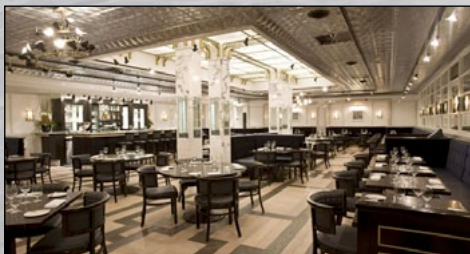
### Highlights:

- One of the Top 35 Hotels in Central Europe, 2013 Condé Nast Traveler Readers' Choice Awards
- 25-minute drive from Václav Havel Airport Prague; two kilometres from main railway station
- Complimentary WiFi in the lobby, restaurants, Health Club and Executive Lounge
- Zinc Restaurant offering an interpretation of modern, innovative European cuisine
- Health Club and Spa
- 14 meeting rooms; Grand Ballroom with foyer

Health Club & Spa



Zinc Restaurant

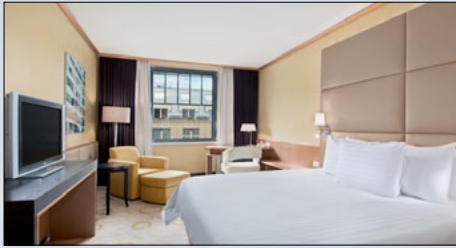


Business Center



# Prague - Hilton Old Town Hotel - Rooms & Facilities

## Standard Room



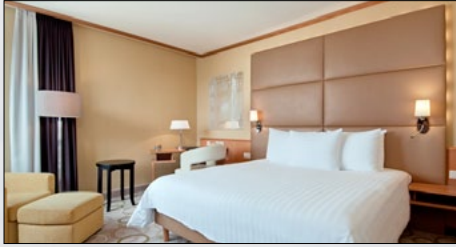
Large opening windows, desk, 32-inch TV, WiFi, air-conditioned, mini-bar

Feel at home in this contemporary 27 sq.m./300 sq. ft. room with large windows. Work comfortably at the large desk with ergonomic chair or unwind in front of the plasma TV. Special touches include magazines and newspapers. Sleeps 3 adults.

### Room features:

- |                              |                               |                  |
|------------------------------|-------------------------------|------------------|
| • Air Conditioning           | Alarm Radio                   | Bath Slippers    |
| • Bathrobe                   | Black-Out Curtains            | On-Demand Movies |
| • High Speed Internet Access | In-Suite Coffee/Welcome Caddy |                  |
| • Cuisinart Coffeemaker      | Mini Bar                      |                  |

## Executive Room



Executive lounge access, desk, 32-inch TV, WiFi, air-conditioned, mini-bar

Choose this bright and airy guest room with one king bed and contemporary decor. Enjoy Executive Lounge access featuring complimentary continental breakfast, free WiFi, snacks and refreshments throughout the day. Work in comfort at the desk, check your emails with WiFi (fees apply) or stay entertained watching on-demand movies on the flat screen 32-inch TV.

### Room features:

- |                              |                               |                  |
|------------------------------|-------------------------------|------------------|
| • Air Conditioning           | Alarm Radio                   | Bath Slippers    |
| • Bathrobe                   | Black-Out Curtains            | On-Demand Movies |
| • High Speed Internet Access | In-Suite Coffee/Welcome Caddy | Lounge Access    |
| • Cuisinart Coffeemaker      | Mini Bar                      | WiFi Access      |

## King Executive Suite



Executive lounge access, living room, sofa, desk, 32-inch TV, WiFi.

Take the stress out of business in this spacious suite with living room and enjoy Executive Lounge access featuring complimentary continental breakfast, free WiFi, snacks and refreshments throughout the day. The bright and airy suite, in attic-style, has one king bed and opening windows. Work in comfort at the desk, keep in touch with WiFi (fees apply) or stretch out on the sofa. Sleeps 3 adults.

### Room features:

- |                              |                               |                  |
|------------------------------|-------------------------------|------------------|
| • Air Conditioning           | Alarm Radio                   | Bath Slippers    |
| • Bathrobe                   | Black-Out Curtains            | On-Demand Movies |
| • High Speed Internet Access | In-Suite Coffee/Welcome Caddy | Lounge Access    |
| • Cuisinart Coffeemaker      | Mini Bar                      | WiFi Access      |

## King Penthouse Suite



Two floor apartment, Executive lounge access, living/dining room, desk, WiFi.

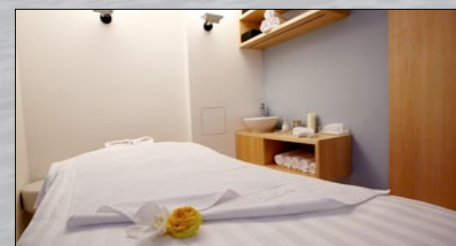
Make this spacious two floor apartment your home away from home with separate living room, dining room and office. Enjoy Executive Lounge access featuring complimentary continental breakfast, free WiFi, snacks and refreshments throughout the day. The bright and airy suite, has one king bed. Work in comfort at the desk area, keep in touch with WiFi (fees apply) or stretch out and watch your 32-inch TV. Sleeps 3 adults.

### Room features:

- |                              |                               |                  |
|------------------------------|-------------------------------|------------------|
| • Air Conditioning           | Alarm Radio                   | Bath Slippers    |
| • Bathrobe                   | Black-Out Curtains            | On-Demand Movies |
| • High Speed Internet Access | In-Suite Coffee/Welcome Caddy | Lounge Access    |
| • Cuisinart Coffeemaker      | Mini Bar                      | WiFi Access      |

## Cybex Health Club & Spa

Guests at the Prague Hilton will enjoy our complimentary Cybex Health Club and Spa, which includes a state-of-the-art gym with indoor swimming pool and solarium. During your stay, you can keep fit with aerobics classes or work out on advanced cardio and weight machines while watching news, TV programs, or movies on plasma screens. Other activities at our top Prague spa include the squash court, indoor cycling, and a climbing wall. Relax and unwind in our steam room, sauna, or Jacuzzi.



## Meetings & Events

Utilize over 1,200 sq. m. of versatile function space, including 14 meeting rooms and the beautiful Grand Ballroom Dvořák. Hold a product launch or host a lavish celebration for up to 360 delegates at this Prague Old Town event location.



## Zinc Restaurant

Hilton Prague Old Town hotel's stylish Zinc restaurant seats up to 120 guests for dining. Zinc offers modern and innovative European cuisine with traditional methods of cooking, based on fresh and seasonal quality ingredients, blended with exotic Asian spices. The menu has been created with the greatest care and attention to detail by the hotel Executive Chef Ari Munandar.

